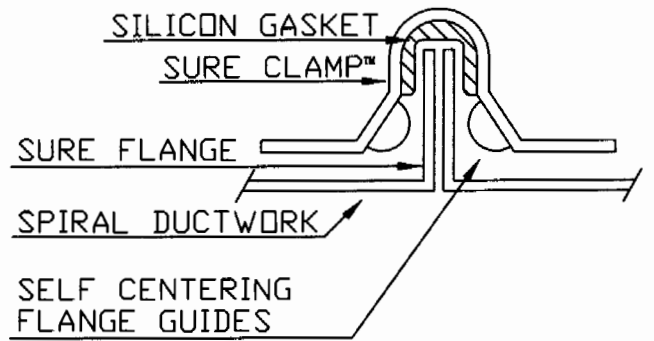
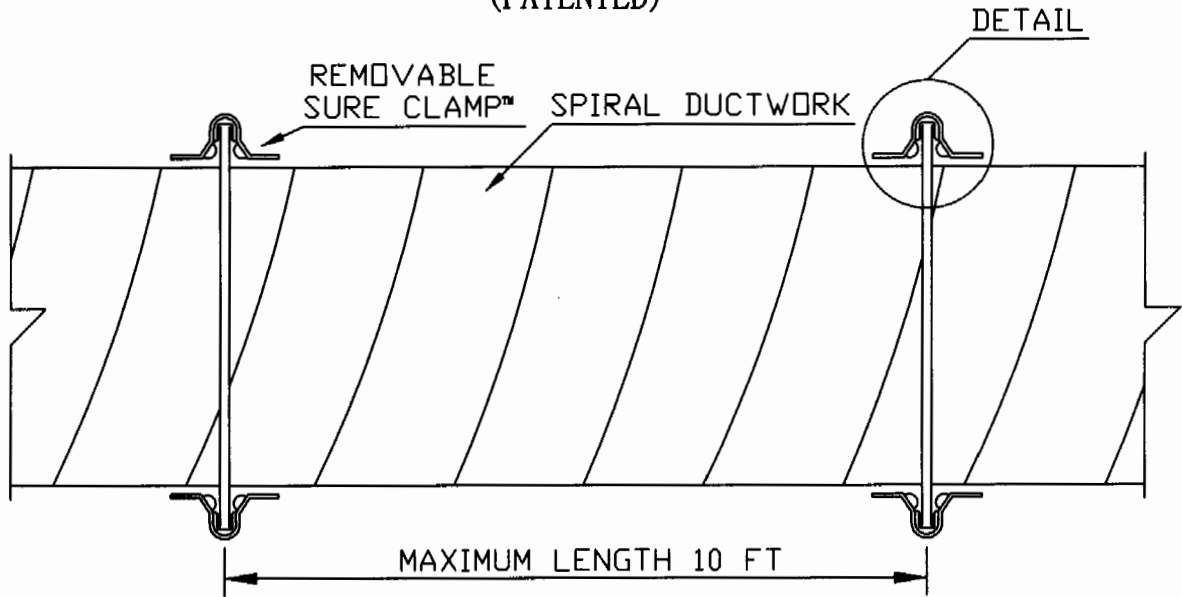
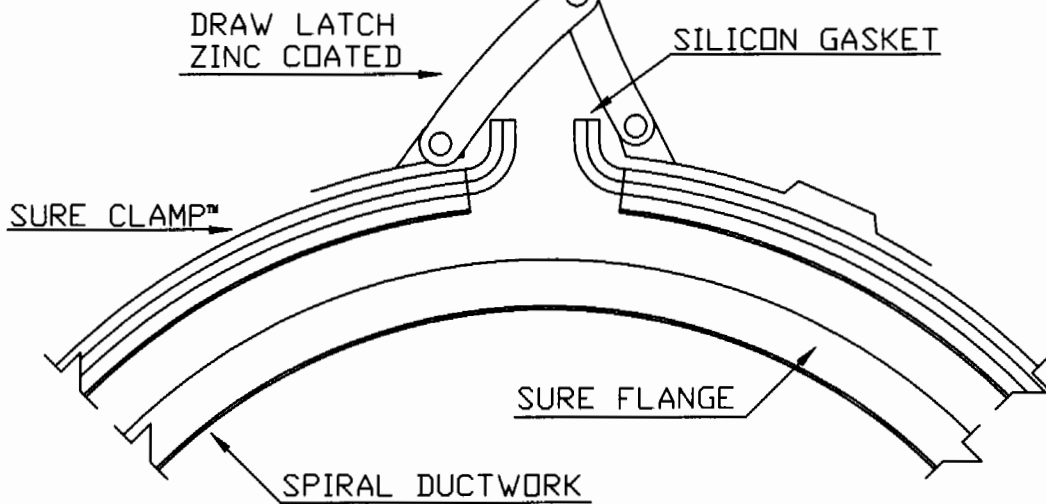


# SURE • CLAMP™

(PATENTED)



SURE CLAMP™  
DETAIL



SURE CLAMP™  
DRAW LATCH  
DETAIL

## **Sure Clamp Spiral**

### **PCD ( Polyvinyl Coated Duct ) Specifications**

A. General : Fabricate single wall ducts, elbows, transitions, offsets, branch connections, and other construction according to SMACNA's "HVAC Duct Construction Standards - Metal and Flexible" and complying with requirements for metal thickness and minimum gauge as shown, reinforcing types and intervals, and joint intervals per static pressure class indicated.

1. Lengths : Fabricate round ducts in lengths appropriate to reinforcement and rigidity class required for pressure class. 10'-0" maximum lengths.
2. Deflection : Duct systems shall not exceed deflection limits according to SMACNA's "HVAC Duct Construction Standards - Metal and Flexible".
3. Round Fittings : Fabricate fittings to match adjoining ducts, and to comply with duct requirements as applicable to fittings. Provide fitting types as indicated on drawings.
4. Round Elbows : Except as otherwise indicated, fabricate elbows with center-line radius equal to 1-1/2 times associated duct width. Where installation requirements prevent the use of fitting types indicated on the drawings and/or with center-line radius equal to 1-1/2 times the duct width, provide center-line radius equal to 1 times the duct width.
5. Ductwork leakage rates not to exceed 2 cfm per 100 square feet with three transverse connection at 20" W.G. negative pressure.

B. Material :

1. PCD ( Polyvinyl Coated Duct ) 4 mils coating on interior and exterior of ductwork surfaces. Repair any surface damage with a acrylic paint.

C. Minimum Ductwork and Fittings Gauge (20" W.G. negative pressure) :

1. 22 GA 4" to 12" diameter, 20 GA 13" to 22" diameter.

D. Longitudinal Seams :

1. Ductwork Seams : ( RL-1 ) Spiral Seam
2. Fittings Seams : ( RL-3 ) Lap and Rivet on 2" interval
3. Seal seams in accordance with SMACNA's HVAC Duct Construction Standard - Metal and Flexible or Manufacturer recommendation.

## E. Transverse Joints: Integral flange ductwork system

### 1. Manufacturer :

Langdon Inc.  
9865 Wayne Ave Cincinnati, Ohio 45215  
Phone (513)733-5955 ext.238 Fax (513)733-8050  
www.langdonsheetmetal.com  
Attn. : Joe Sandman. Mobile # 513-678-6825

- a. Sure-Clamp Spiral, even and odd sizes 4" diameter to 22" diameter.
- b. Connection : 90 degree continuous machine formed ductwork flange with minimal damage to polyvinyl coating. Repair any surface damage to flange with a acrylic paint.
- c. Clamps : Galvanized with zinc coated draw latch and self centering flange guides. Gasket profile forms to the inside of clamp, sealing the outer edges of the ductwork flange.
- d. Clamp Gauge : 22 GA 4" diameter. 20 GA 5" to 22" diameter.
- e. Gasket : Red silicone sponge gasket. Temperature range : -40 F to +400 F